



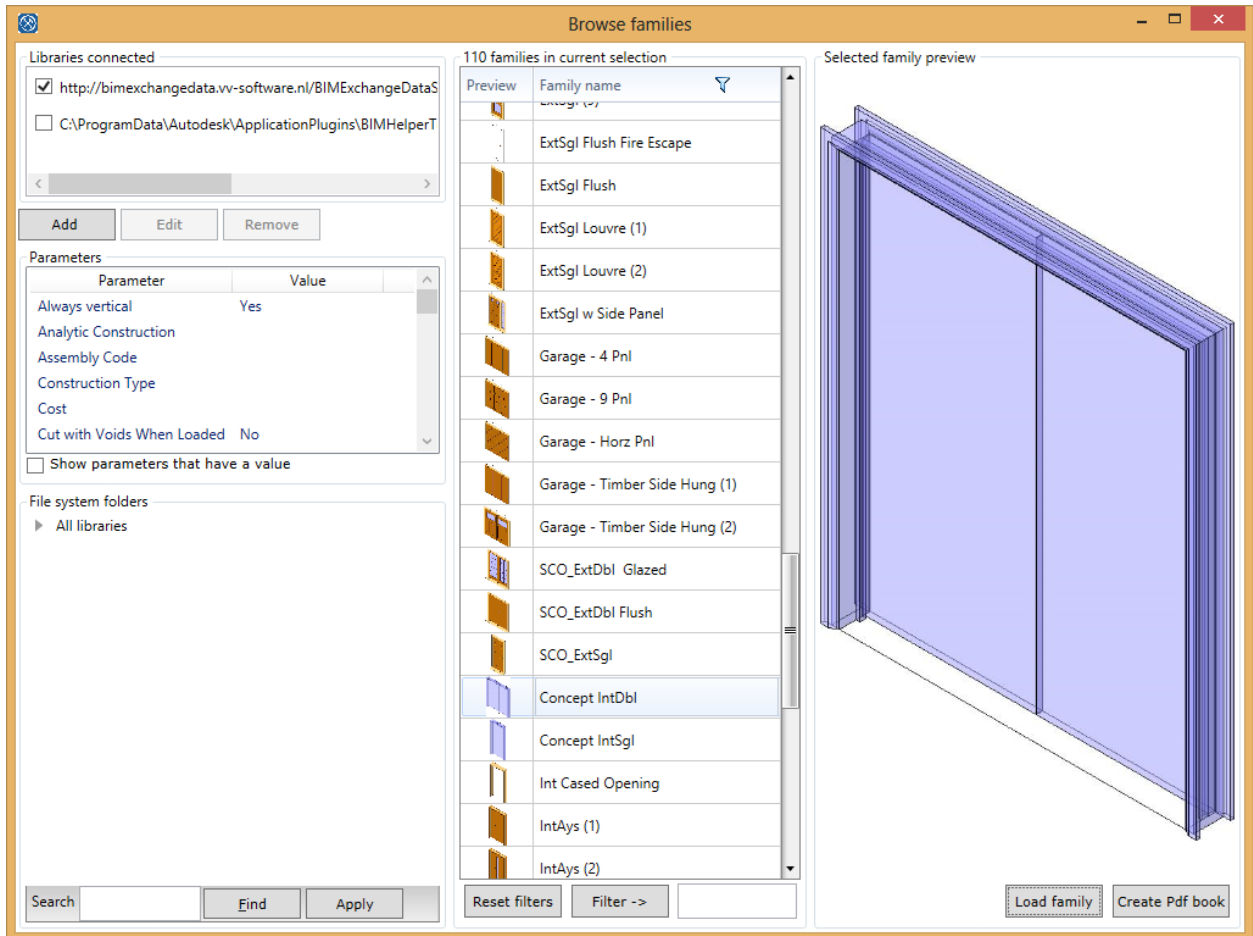
Library browser

© 2015 VV-Software.

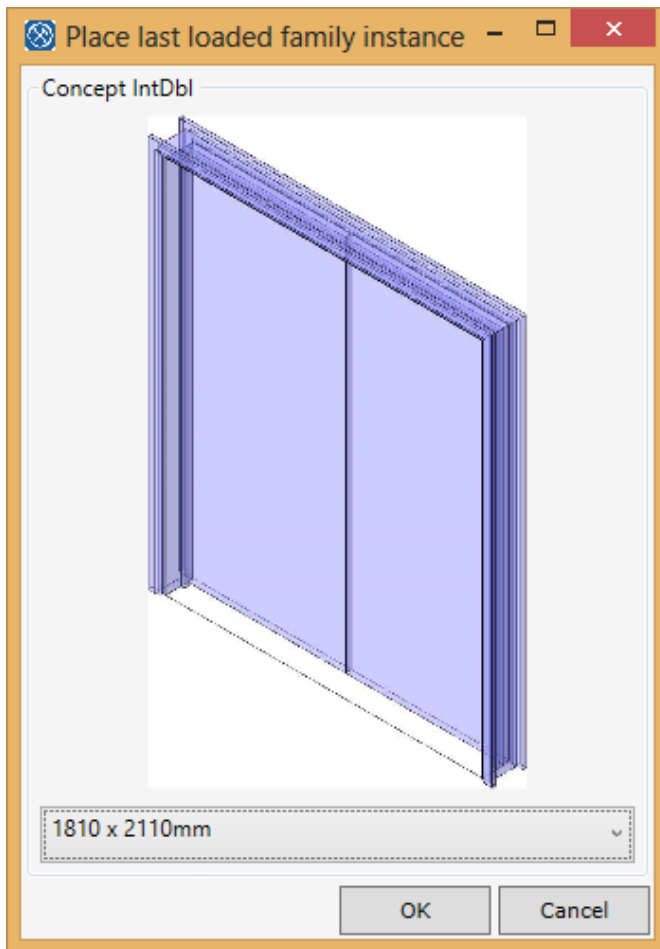
Library browser



- After you have added your own library 'with export libraries' you can select from the ribbon the command 'Browse families'. The family browser window will show. All the families which are part of the actual selection will be shown in the middle. If you select a family it's preview file, if available, will show on the right hand side.

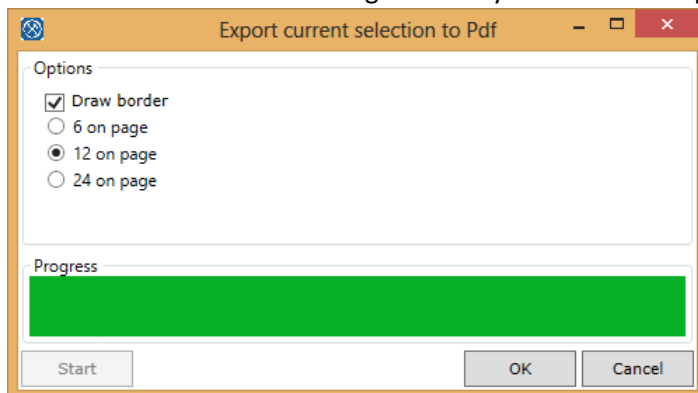


- In the 'connected libraries' group the libraries will show which were exported or uploaded before.
- In the parameters group the parameters of the selected family will show
- In the file system folders you can set a path to narrow the filter, or multiple paths. If you keep the CTRL key pressed, you can select multiple paths
- In the filter box, you can type part of the family name to filter
- Load family will load the family into Revit. You can load families into Revit one by one, if you press the 'Place family instance' command from the Ribbon the family that was loaded into the project just before, can be placed. Also the preview will be shown, if it is available.



If there are more than one types available, you can specify the wanted type from the dropdown box

- Create PDF book starts a dialog in which you can create a pdf file from the current selection



- Select the options, press start and the pdf file will be created
- Press ok to open the pdf file