



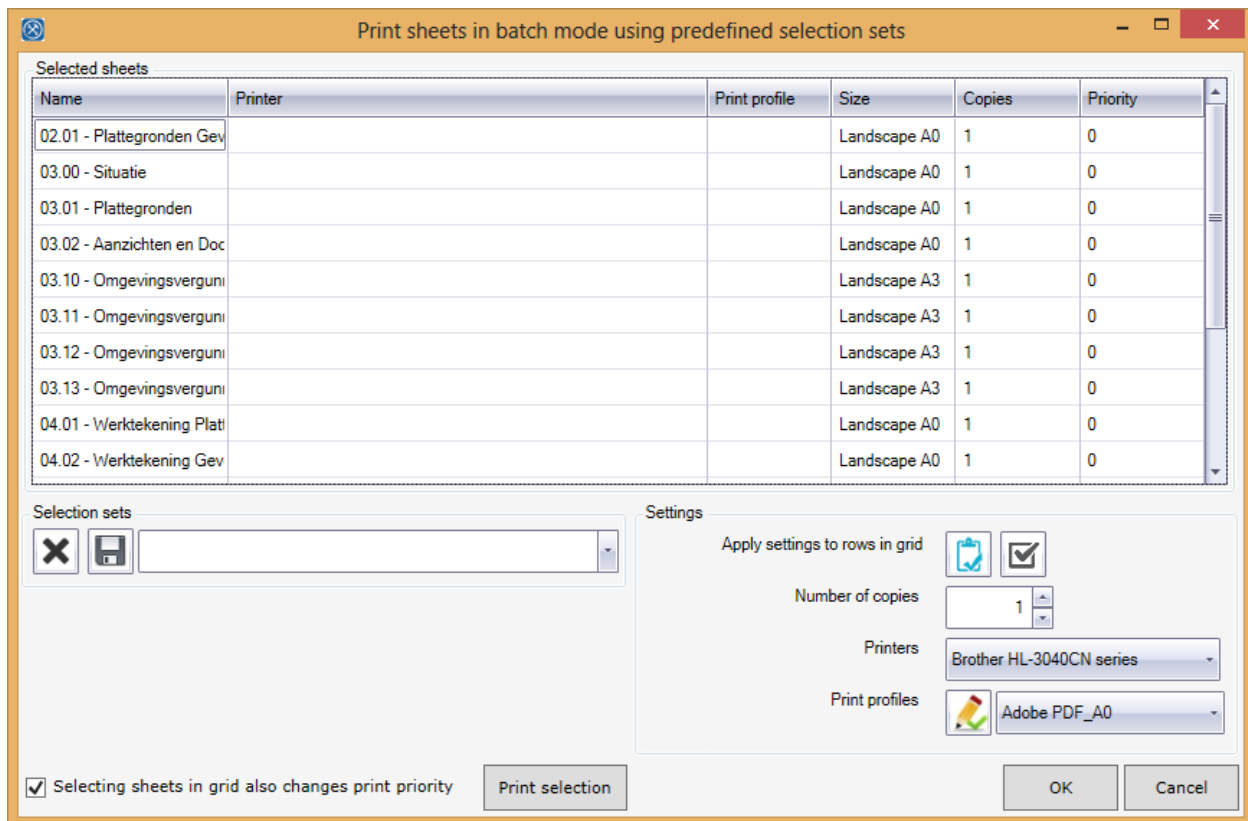
Batch print

© 2015 VV-Software.

# Batch Print

Batch print enables you to print a predefined selection of view sheets in batch mode, using predefined print profiles.

This predefined selection can be saved in selection sets, which will be stored inside your revit project file (.rvt)



- Start batch print from the ribbon
- A dialogue will appear showing you the view sheets that can be printed
- Select the printer you want to use for a certain group of sheets, then select 'edit print profiles' in which you can define the print setup, and save this setup using a name

Edit print profiles will show a dialogue, similar to the revit dialogue in which you can define your print profiles.

You can save the print profiles,

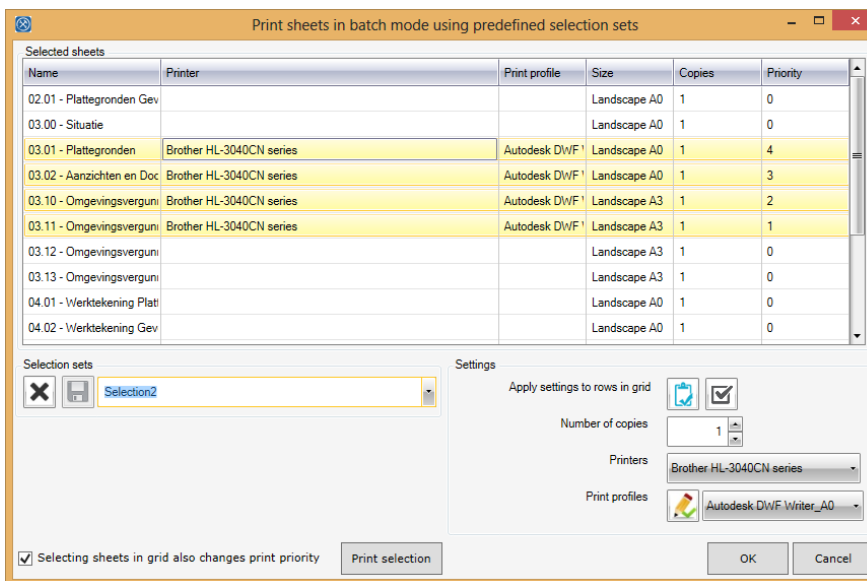
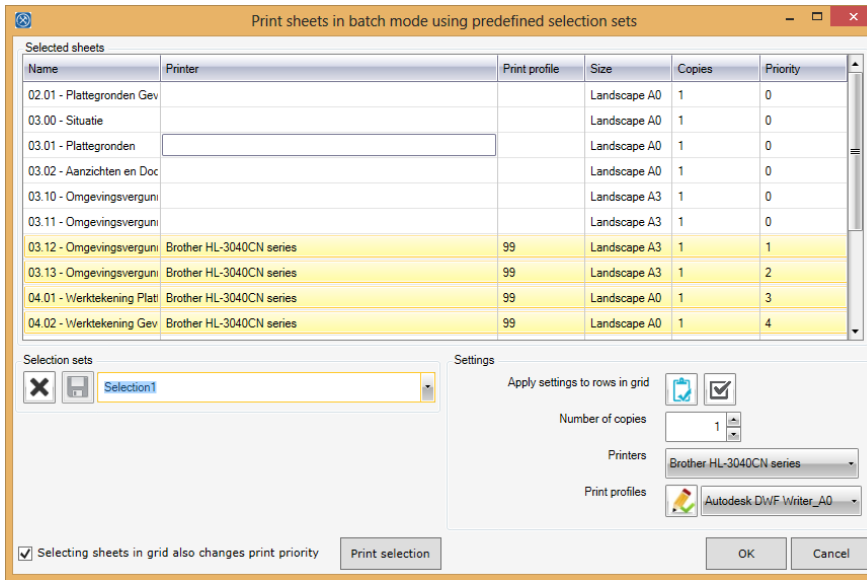


The screenshot shows a dialog box titled "Create / Edit Plot profiles" with a close button (X) in the top right corner. The dialog is organized into several sections:

- Paper:** Paper Size: Letter (dropdown), Source: <default tray> (dropdown).
- Orientation:** Portrait (radio button), Landscape (radio button, selected).
- Paper Placement:** Center (radio button, selected), Offset from corner: NoMargin (dropdown), 0.000 =x 0.000 =y (input fields).
- Hidden Line Views:** Remove Line Using: Vector Processing (radio button, selected), Raster Processing (radio button).
- Zoom:** Fit to page (radio button, selected), Zoom: 100 (input field) % Size.
- Appearance:** Raster quality: High (dropdown), Colors: Color (dropdown).
- Options:** View links in blue (checkbox), Hide ref/work planes (checkbox, checked), Hide unreferenced view tags (checkbox), Hide scope boxes (checkbox, checked), Hide crop boundaries (checkbox, checked), Replace halftone with thin lines (checkbox).
- Profile:** Printer: Microsoft XPS Document Writer, Name: Default (dropdown). Buttons: Save, Save As..., Rename, Delete.

At the bottom of the dialog are buttons for Revert, OK, and Cancel.

- After you press OK you will return to the main dialogue
- From the main dialogue you can apply the wanted number of copies (irrelevant when it is printed to .pdf or .xps), the selected printer, and the print profile to the selected rows in the main grid, or all the rows in this grid.
- If there is a print priority, this can be edited directly in the grid



- Selection sets can be saved using a name, so the next time you start batch print, you can select from the drop down a certain selection set, so that all the settings (printer, number of copies, selected sheets, and print profile) will be retrieved at once! You can type the name of a selection directly in the combo box above the 'save selection' button. This also enables you to save a selection under a name (save as). Simply select a name from the combo box, type the new name in the combo box, and press save selection again
- Print selection prints the selected sheets, and closes the dialogue
- Remember: all the settings are stored in the .rvt file. So don't forget to save the revit model before you finish revit, otherwise your batch print settings will be lost.